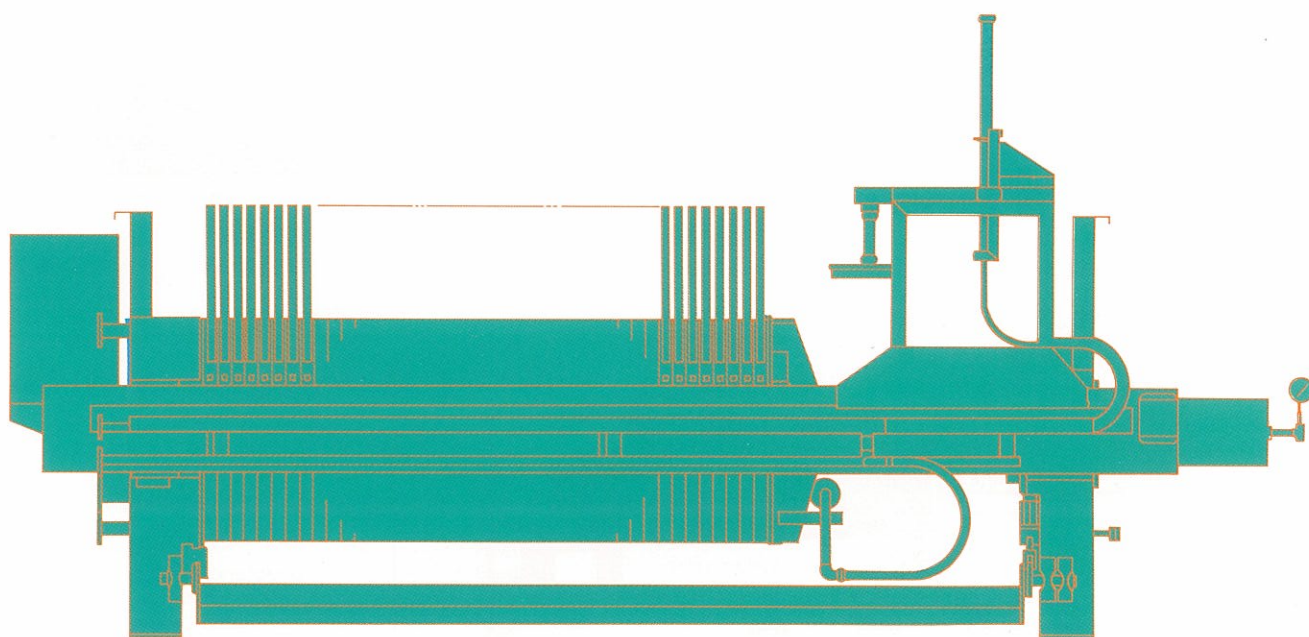


ISHIGAKI

FILTER PRESS

FILTERS

MODEL IMD
MODEL IMF



ISHIGAKI FILTER PRESS MODEL IMD/IMF

Provides the successive plate opening mechanism and the filter cloth shaker/washer assemblies and dripping pan unit can be provided at the option of customer.

Model **IMD** filter press is a recessed plate press for use with diaphragms to give two stage dewatering.

Model **IMF** filter press is a recessed plate press for use without diaphragms.

FEATURES

CENTER BOTTOM FEEDING

Slurry is fed through the slurry feed port provided at the center of plate and evenly dewatered and uniform cake thickness can be obtained. Cake washing (through feed port) enables uniform cake washing.

4-CORNER FILTRATE DISCHARGING

Various cake washing (back wash) are available through filtrate discharge ports at four corners.

ADVANCED DIAPHRAGM MECHANISM

By providing advanced diaphragm mechanism, slurry can be dewatered without applying unreasonable forces onto the diaphragm rubber. This results in longer life of diaphragm.

EASY MAINTENANCE

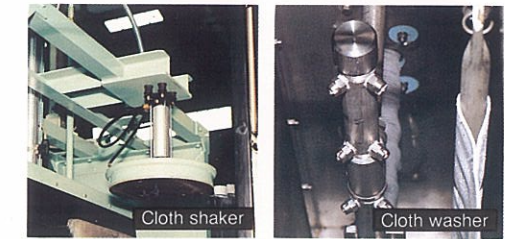
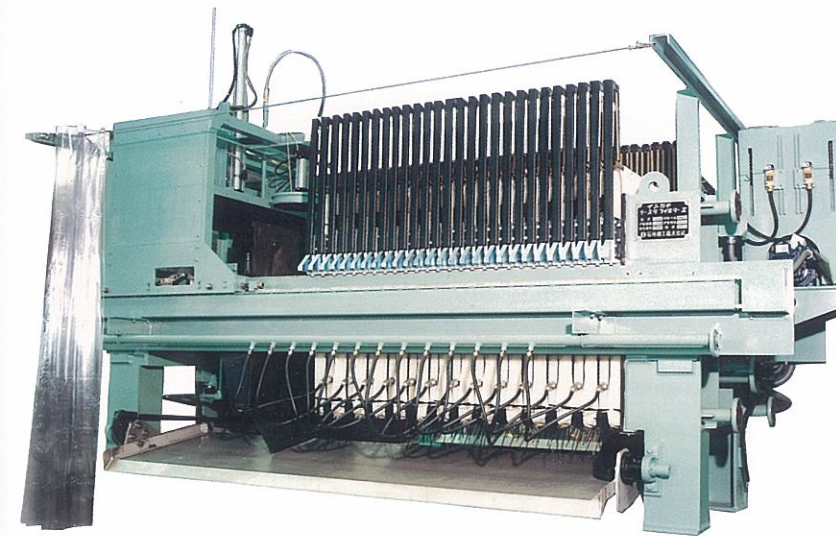
As the filter cloth is mounted independently on each filter plate, it is easy to change the filter cloth. And also the diaphragm rubber can be changed one by one very easily.

LIGHT WEIGHT AND COMPACT

Recessed plates and successive plate opening allows the equipment to be compact. The filter area per unit installation area becomes larger than other type of filter presses. The weight of filter plate can be made extremely light due to polypropylene plate available.

AUTOMATIC OPERATION

Fully automatic operation mechanism is provided, so that the operation is very simple.



SPECIAL EQUIPMENT (OPTION)

We can provide filter cloth shaker/washer devices, cake wash system and dripping pan unit as special equipments.

MECHANISM (MODEL IMD)

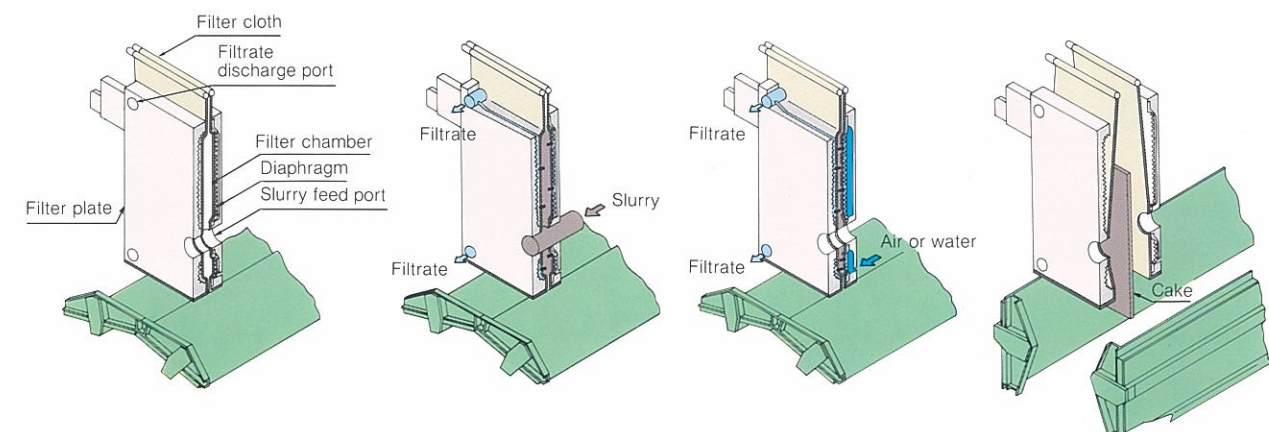


PLATE CLOSING

On starting operation, a hydraulic cylinder is moved by a hydraulic pump to form filter chamber by means of tightening the filter plates.

FILTERING

Slurry is fed into the filter chamber through feeding port provided at the bottom of the filter plate. The pressate is discharged through side nozzles.

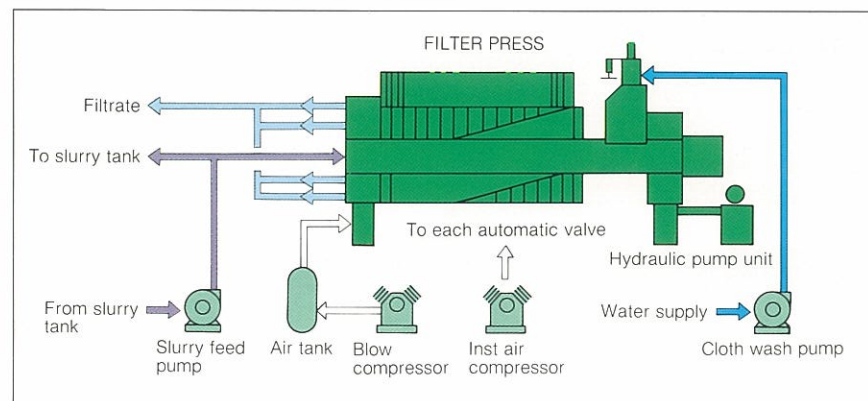
COMPRESSION

When the filtering process is completed, diaphragm is expanded by air or water which squeezes the accumulated material within the filter chamber.

CAKE DISCHARGE

After completion of the compression process, filter plates are successively opened one by one by means of the plate shifting device. At the same time when the filter plate is opened, the dewatered cake is discharged.

FLOW SHEET (MODEL IMF)



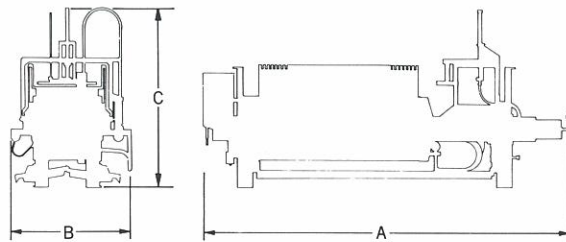
TYPICAL APPLICATIONS INCLUDE

MODEL IMD	MODEL IMF
<ul style="list-style-type: none"> Agricultural Products Fermentation Gypsum Kaolin Metallic Compounds • Oxide • Hydroxides • Carbonates • Sulphates Chemical processes 	<ul style="list-style-type: none"> Oil Extraction Talc Pigments and Dyes Resins Sludges • Municipal • Industrial • Alum • Blast Furnace
	<ul style="list-style-type: none"> Metal Concentrates • Copper • Zinc • Iron Cement Mineral processing Coal Leaching processes • Nickel • Silver • Gold

■ STANDARD SPECIFICATION

Plate Size (mm)	Number of Chambers	MODEL IMD				MODEL IMF			
		Filtering Area (m ²)	Approximate Dimension (mm)			Filtering Area (m ²)	Approximate Dimension (mm)		
			A	B	C		A	B	C
1000	8	12	3815	2360	3165	12	3710	2360	3165
	12	19	4125			19	3995		
	16	25	4385			25	4225		
	20	32	4695			32	4455		
	26	41	5085			41	4855		
	32	51	5525			51	5205		
	40	64	6095			64	5715		
	50	80	6795			80	6295		
1500	30	109	6055	3030	4845	110	5790	2965	4855
	40	146	6775			147	6355		
	60	219	8215			220	7485		
	80	292	9655			294	8615		
	100	365	11095			368	9735		
	120	438	12535			441	10865		
	140	511	13965			515	11995		
	160	584	15405			588	13125		
	180	657	16845			663	14255		
	200	730	18285			736	15375		

* The specifications and dimensions stated in this catalog may be changed without notice.



 **ISHIGAKI COMPANY, LTD.**

1-1-1 Kyobashi, Chuo-ku, Tokyo 104, Japan
 Phone: 03-3274-3511 Telefax: 03-3281-1577